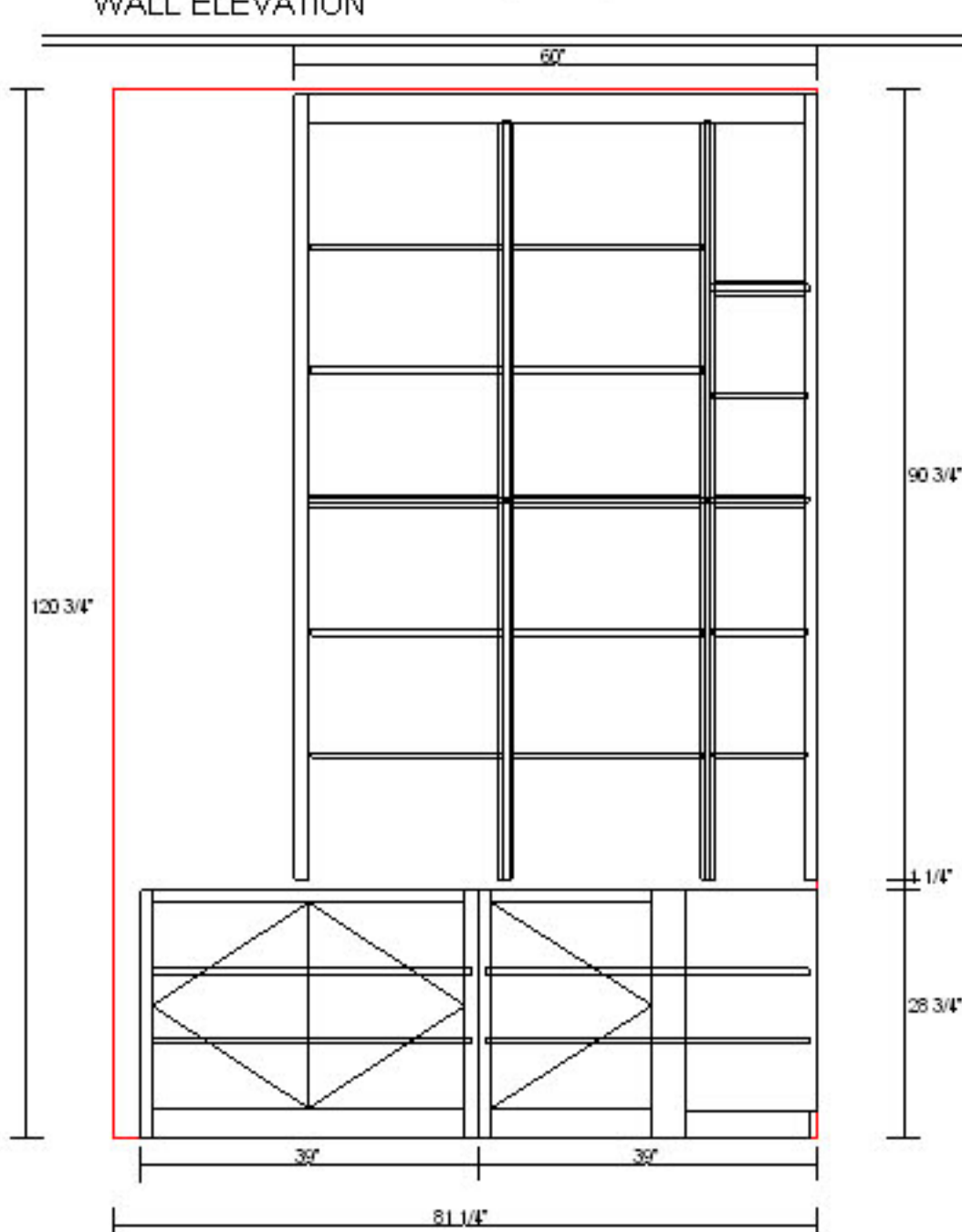


[cab 04]

WALL ELEVATION

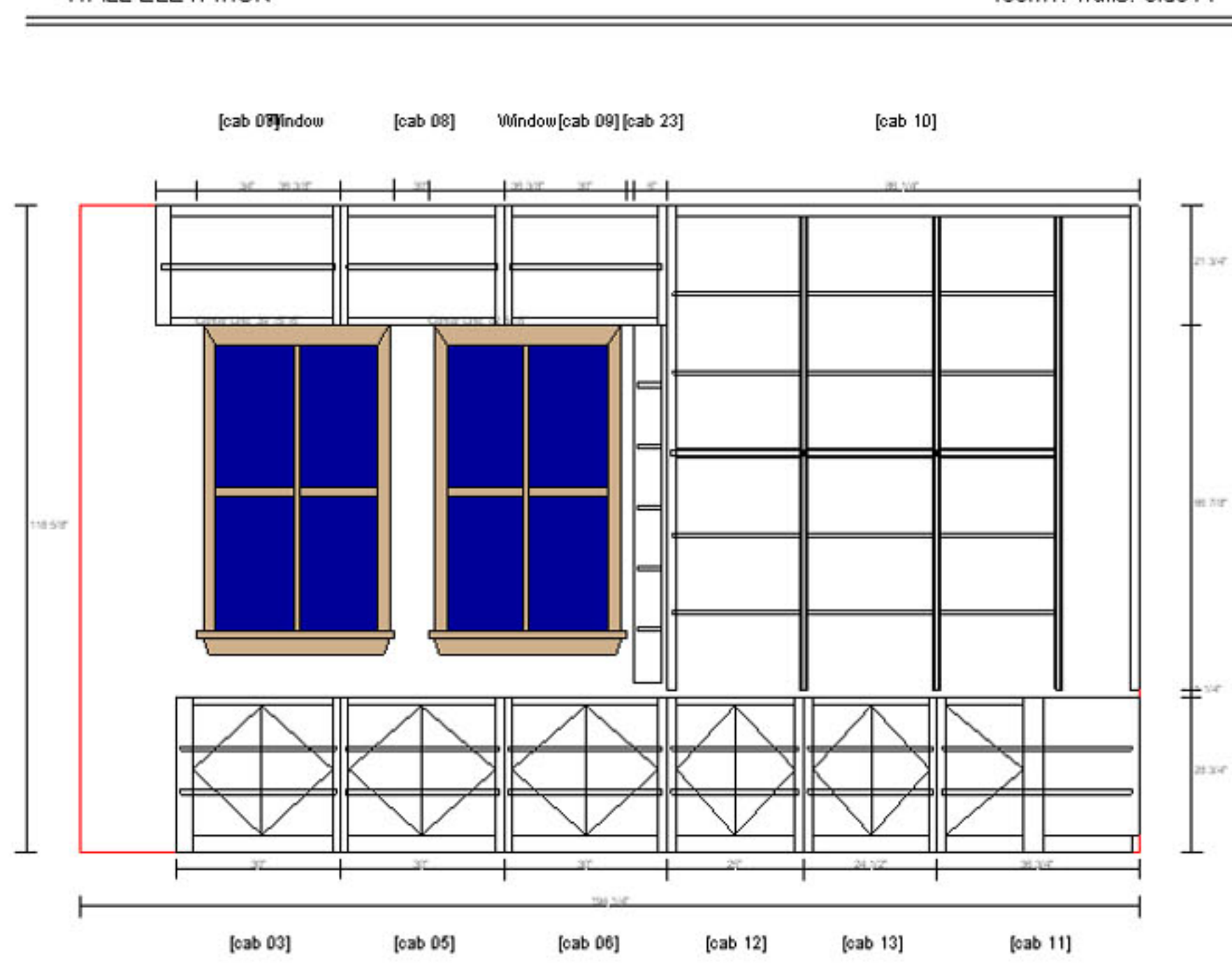
room1: wall6: side A



cab	unit	width	height	depth	L. scribe	R. scribe
cab 01	Base	39"	28 3/4"	18"	1/4"	1/4"
cab 02	Extended End Base	39"	28 3/4"	18"	1/4"	1/2"
cab 04	Upper	60"	90"	14"	1/4"	1/2"

WALL ELEVATION

room1: wall5: side A

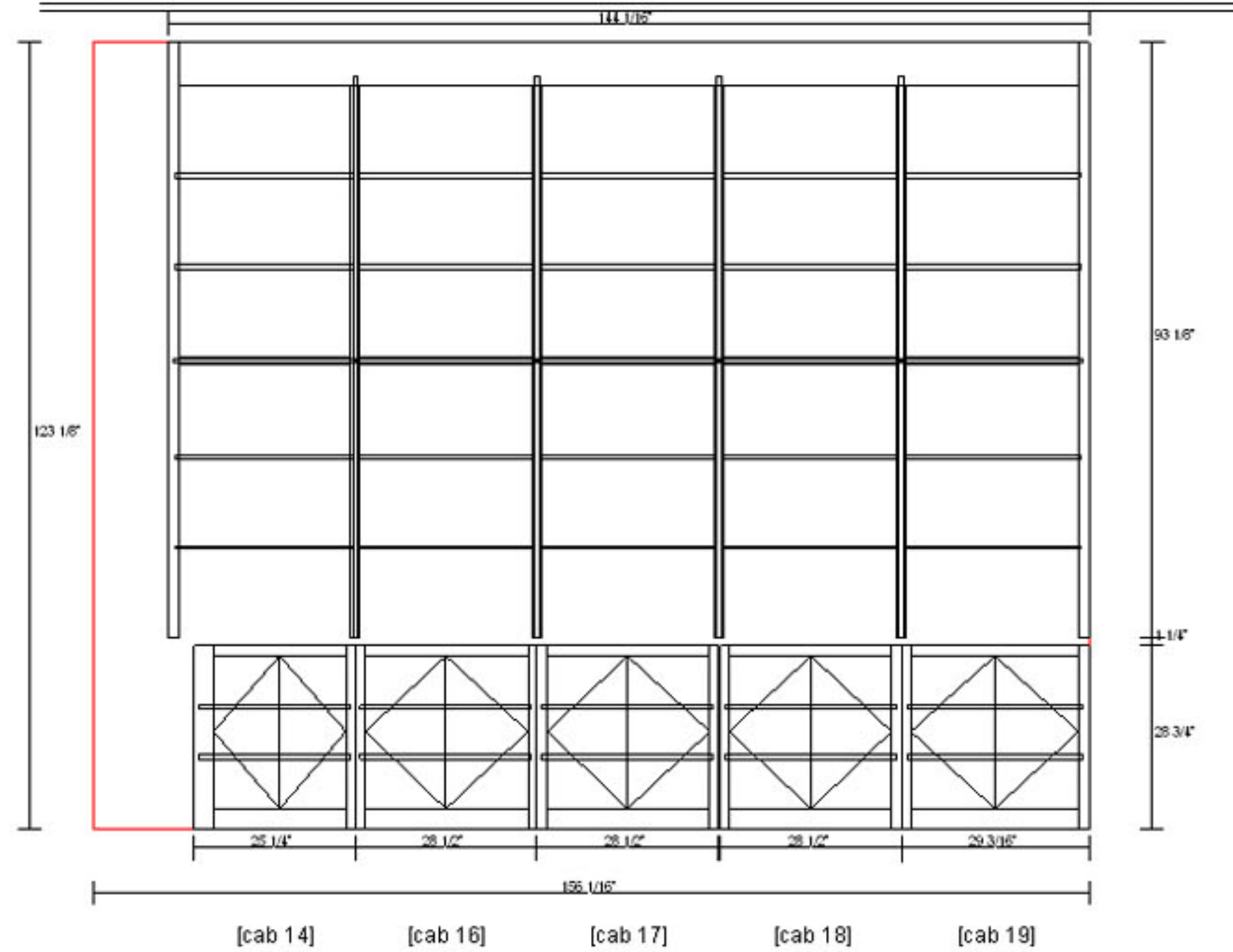


cab	unit	width	height	depth	L. scribe	R. scribe
Window	Window	36 3/8"	60 3/8"			
Window	Window	36 3/8"	60 3/8"			
cab 03	Base	30"	28 3/4"	16"	1/4"	1/4"
cab 05	Base	30"	28 3/4"	16"	1/4"	1/4"
cab 06	Base	30"	28 3/4"	16"	1/4"	1/4"
cab 07	Upper	34"	21 3/4"	12"	1/4"	1/4"
cab 08	Upper	30"	21 3/4"	12"	1/4"	1/4"
cab 09	Upper	30"	21 3/4"	12"	1/4"	1/4"
cab 10	Upper	86 1/4"	88 5/8"	12"	1/4"	1/2"
cab 11	Extended End Base	36 3/4"	28 3/4"	16"	1/4"	1/2"
cab 12	Base	25"	28 3/4"	16"	1/4"	1/4"
cab 13	Base	24 1/2"	28 3/4"	16"	1/4"	1/4"
cab 23	Radius L End Upper	6"	66 7/8"	12"	0"	1/4"

WALL ELEVATION

[cab 15]

room1: wall4: side B

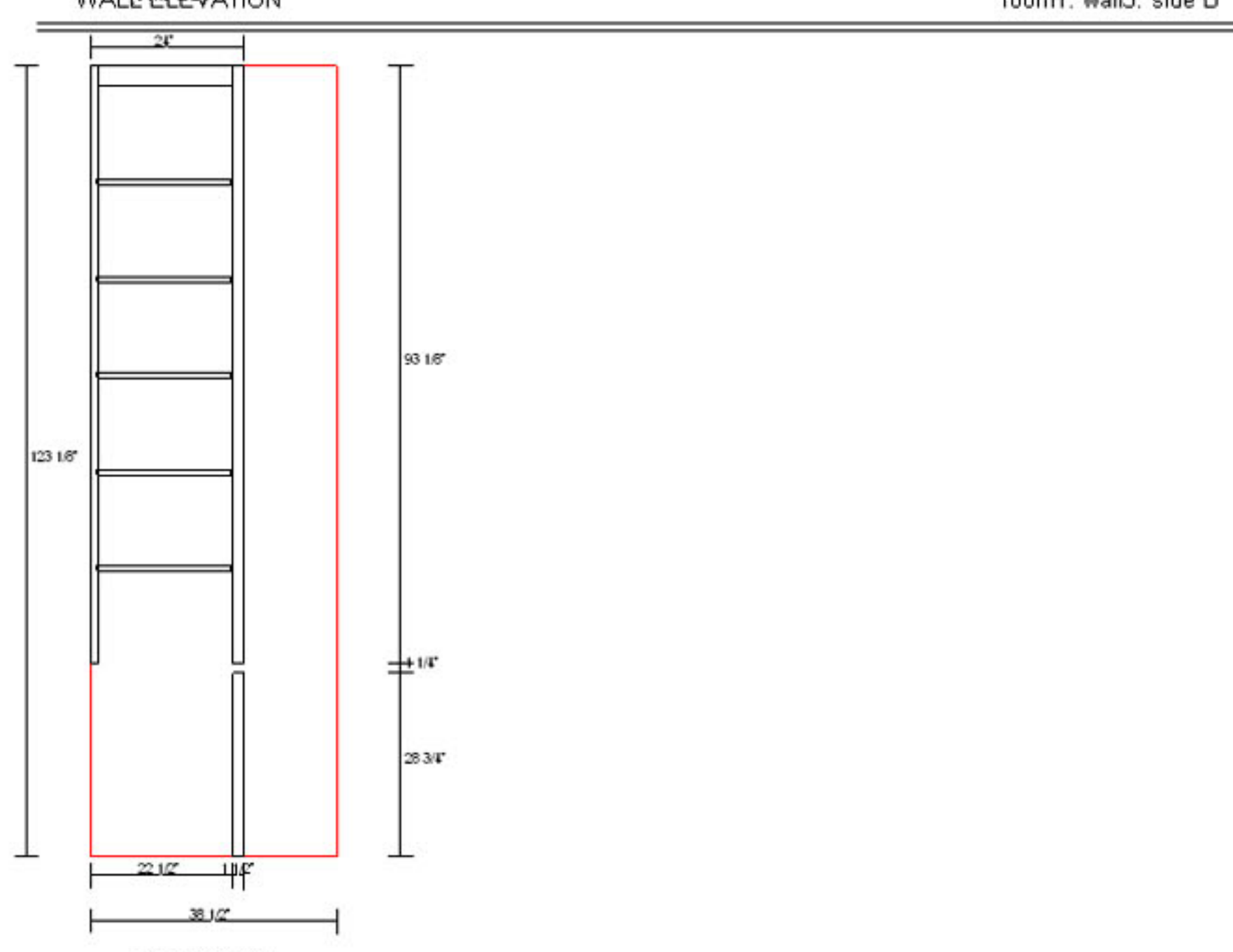


cab	unit	width	height	depth	L. scribe	R. scribe
cab 14	Base	25 1/4"	28 3/4"	18"	1/4"	1/4"
cab 15	Upper	144 1/16"	93"	14"	1/4"	1/2"
cab 16	Base	28 1/2"	28 3/4"	18"	1/4"	1/4"
cab 17	Base	28 1/2"	28 3/4"	18"	1/4"	1/4"
cab 18	Base	28 1/2"	28 3/4"	18"	1/4"	1/4"
cab 19	Base	29 3/16"	28 3/4"	18"	1/4"	1/2"

WALL ELEVATION

[cab 20]

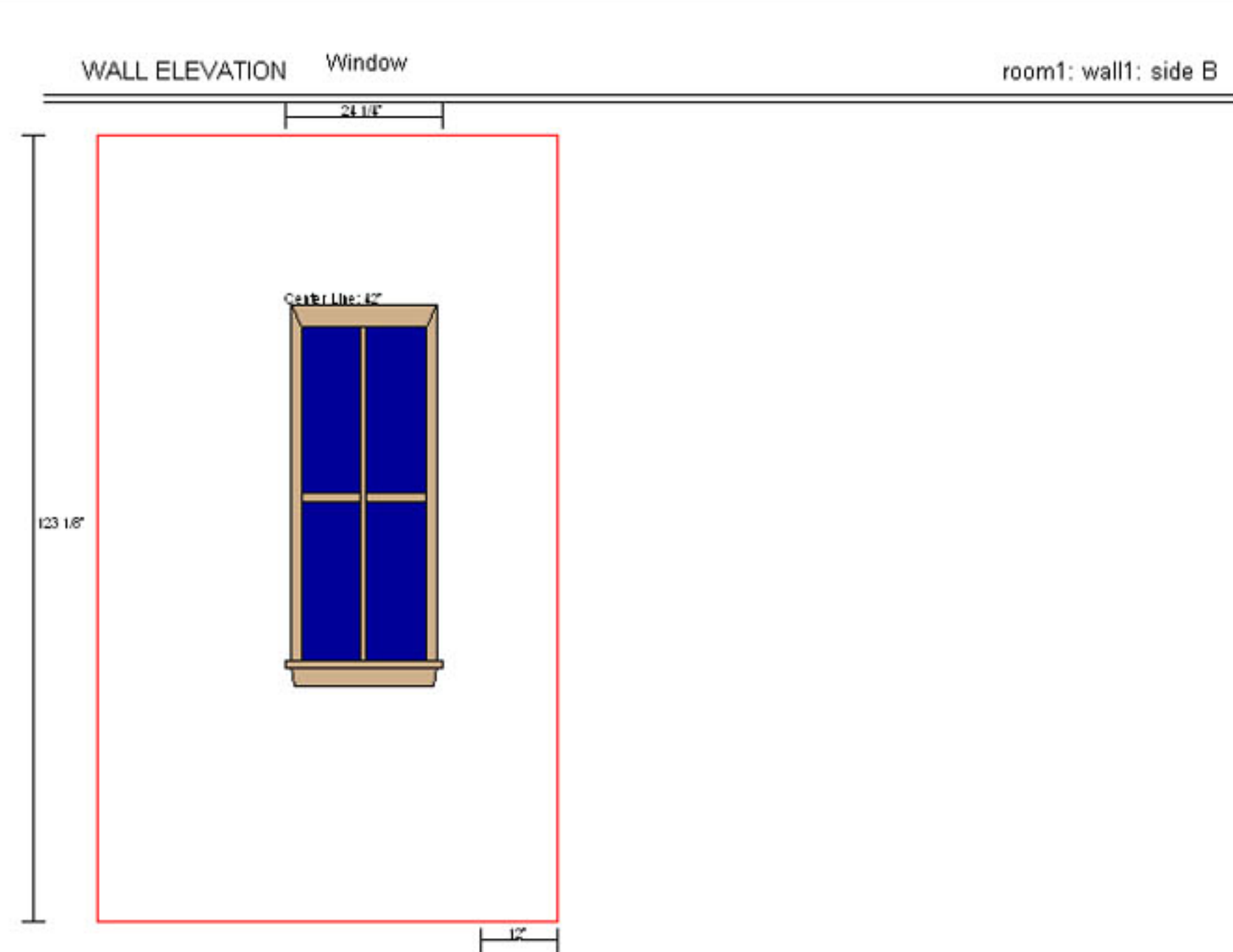
room1: wall3: side B



cab	unit	width	height	depth	L. scribe	R. scribe
cab 20	Space Base	22 1/2"	28 3/4"	60"	0"	0"
cab 22	Upper	24"	93"	14"	1/2"	1/4"
cab 24	Base	1 1/2"	28 3/4"	60"	0"	1/4"

WALL ELEVATION Window

room1: wall1: side B



cab	unit	width	height	depth	L. scribe	R. scribe
Window	Window	24 1/4"	59 3/4"			
cab 21	Space Base	12"	28 3/4"	41 3/4"	0"	0"